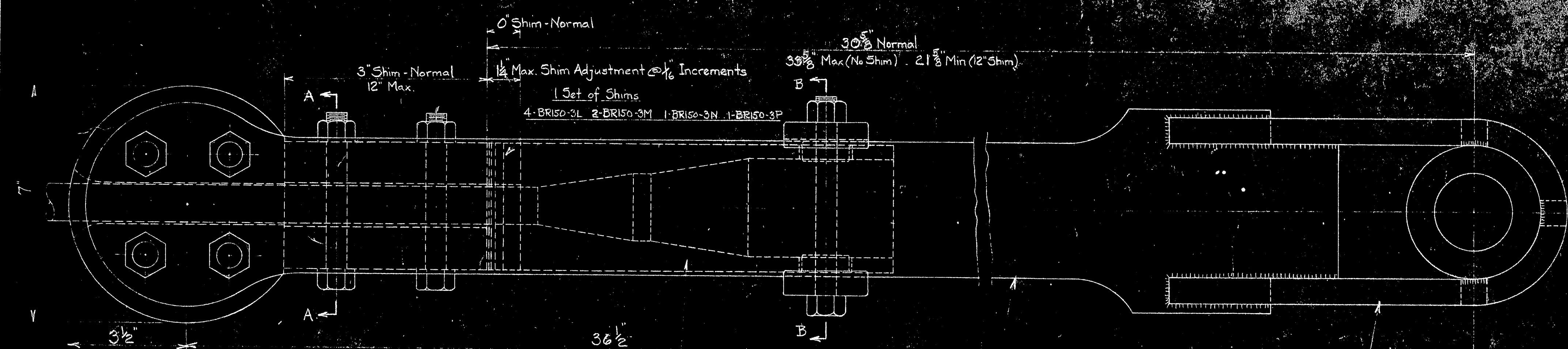
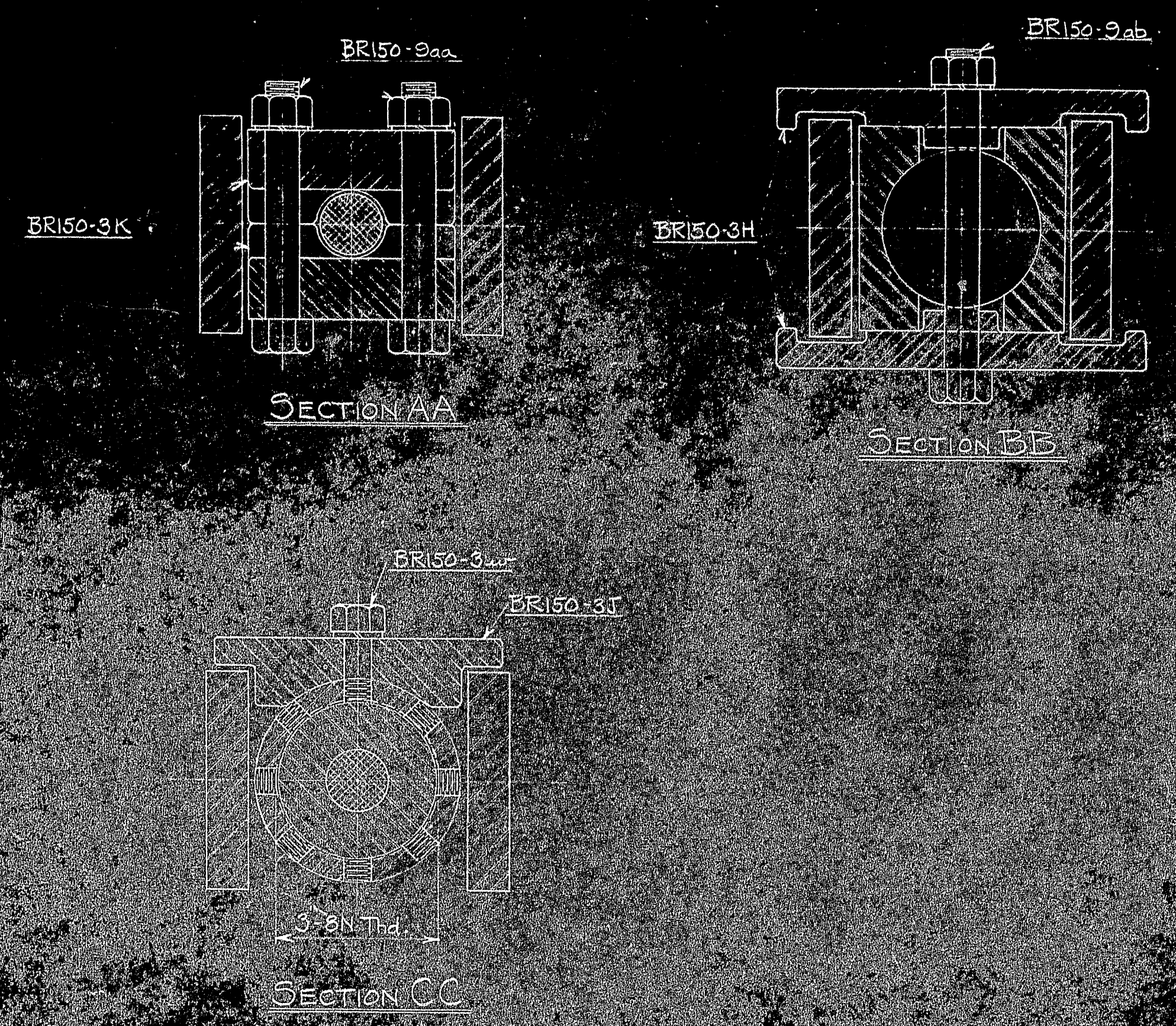


ASSEMBLY OF LONGITUDINAL STAY AND TRUSS CONNECTION AT PANEL POINTS 2-3-4-5-6-7-27-28-29-30-31 and 32



ASSEMBLY OF LONGITUDINAL STAY AND TRUSS CONNECTION AT PANEL POINTS 7-8-9-10-11-13-21-23-24-25-26 and 27



MARK			REQ'D	MAT'L	REQ. NO.	NAME	REMARKS	
BILL OF MATERIAL								
JOHN A. ROEBLING'S SONS CO., TRENTON, N. J.								
QTY		Washer BR150-3F Reinforced		MSU-47		DEER ISLE BRIDGE REINFORCEMENT		
QTY		Length of connection to 36"		6-1-47		ASSEMBLY OF LONGITUDINAL STAYS		
QTY		Length of connection to 36"		2-7-47		AND TRUSS CONNECTIONS		
QTY		General Reinforcement		2-7-47				
BY		REVISIONS		DATE				
APPROVED				SCALE 6"=1'-0"		SERIAL	SHEET	
ROBINSON AND STEINMAN				DES. DR. 1-27-44		BR150	11	
MARCH 3, 1944				CH. DR.				
CH. DR.				ENG'R				
DWG. NO.	TITLE							
REFERENCE DRAWINGS								

